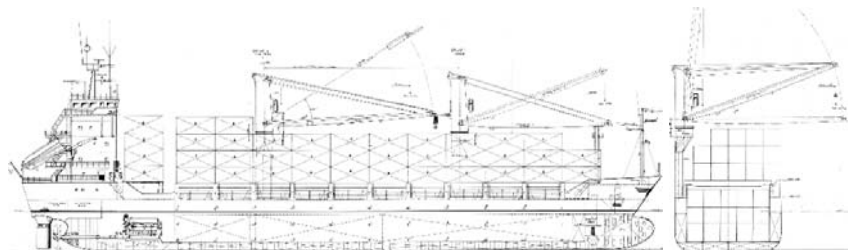


## Black Rhino



### Ship Basic Information

Builders	Yardımcı Group
Type	Multi-purpose Double Hull Box-shaped
Flag	Cyprus
Port of Registry	Limassol
Classification	DNV, +100A5, MULTIPURPOSE SHIP; Equipped for Carriage of Containers, +MC, AUT, Solas II-2 Reg.19 Class 1.4, 5, 2, 3, 4, 5.1, 6.1, 8, 9
EDDI, Voluntary	(for this Ship type no max EEDI is allocated)

### Vessel Specific Information

	IMO No.	Year of Built	Summer Deadweight	Lightweight (mt)	Environmental Rating
BLACK RHINO	9148790	1997	5,150	2,064	EEXI & CII exempt

### Dimensions and Main Data

Length o.a.	100.75 m
Length b.p.	93.95 m
Breadth max.	16.00 m
Depth to Main Deck	7.95 m
Deadweight Summer	5,150 mt
Draft Summer	6.20 m
Gross Tonnage	3,838 GT
Net Tonnage	2,035 NT
Speed / Consumption	About 12.00kn at about 12.0mt LSFO 180cst (at design draft of 6.20m and Bf2)
Timber Fitted	NO
Suez / Panama Canal Fitted	Yes
St. Lawrence Fitted	NO
Bowthruster	Yes
Cement Hole Fitted	NO
Stern Anchor Fitted	NO
Air Draft	30.00 m
Crew Complement	15

### Capacities

LSFO-180 cst	490.0 cbm (at 100%) (incl. day and settling tanks)
MDO	93.00 cbm (at 100%)
Water ballast	1,700 cbm (at 100%)
Fresh water	51.00 cbm (at 100%)
Hatches	FWD and AFT hydraulic folding and centre 6 pontoons
Holds	1 cargo holds with full tween deck positions
Hold Dimensions (LxBxH)	Hold No. 1 = 62.00m x 12.64m x 8.70m

Movable Bulkheads	2 full bulkheads (2 panels for each b/h = 4 in total)
Tween deck (movable bulkheads)	bulkhead panels can be placed as tween deck
<b>All holds mechanically ventilated / 6 air changes per hour</b>	
Grain Capacity	abt 235,973 cbf excluding bulkheads
Containers Capacity	Total 364 TEU (144 TEU in hold and 220 TEU on deck)

<b>Admissable Load</b>		<b>Container Stack weight (Teu/Feu)</b>
Tank top	15.00 mt/sqm	72.0 mt / 90.0 mt (Teu/Feu)
Tween deck (movable bulkhead)	2.40 mt/sqm	N.A.
Weatherdeck / Hatchcover	2.20 mt/sqm	50.0 mt / 28.0 mt (Teu)

<b>Gear</b>	
Crane 1 (Hold 1)	SWL 40mt x 24.0m at 22.0m outreach
Crane 2 (Hold 1)	SWL 40mt x 24.0m at 22.0m outreach
Crane 1 & 2 combined (Hold 1)	SWL 80mt x 12.0m outreach

<b>Machinery</b>	<b>Main Engine</b>
Type	Wartsila Model 9 R 32 E
Power	3,689 kW at 750 rpm
Grade Fuel used	LSFO 180 cSt

<b>Auxiliary Engine</b>	
Type	MAN D 2842 LE
Number	2 + 1
Power	443 kW each
Grade Fuel used	LSMDO LSFO 180c
Generator	350 kW, 400V, 50Hz, 1,500 rpm
Shaft Generator	500 kVA, 400V, 50Hz, 1,500 rpm
Bow thruster	KaMeWa, 350 kW

<b>Fuel Consumption at speed of abt 12.00kn at design draft of 6.20m (Bf2)</b>	
Ship at Sea	About 12.00mt LSFO 180cst
	About 0.0mt (shaft generator)
Ship in Port	About 0.80mt

<b>Navigation &amp; Communication Equipment</b>	
2 ARPA Radars	Anemometer & Anemoscope
1 ECDIS	GMDSS A3
Gyro Compass & Autopilot River/Sea also connected to Magnetic Compass	MF/HF Transmitter/Receiver
Doppler Speed Log	2 VHF Radiotelephones
Echosounder	3 Portable VHF
GPS Receiver	Inmarsat Fleet Broadband 250 + C
DGSP Receiver	Fax
Navtex Receiver	Inmarsat V-Sat
AIS	ChartCo Receiver
SSAS	ChartCo Metmanager Receiver
LRIT	
<i>All details to be considered as about, given in good faith but without any guarantees</i>	

GENERAL ARRANGEMENT DRAWING

