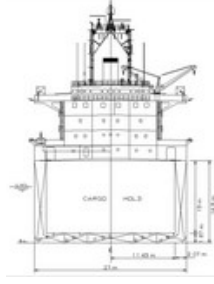
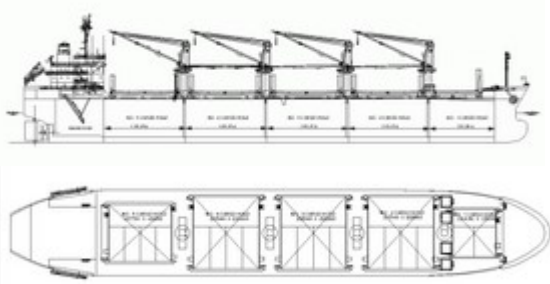


## S-CLASS



### Ship Basic Information

Builders	Saiki Heavy Industries, Japan
Type	Multi-Purpose Double Hull Box-shaped Bulk Carrier
Flag	Cyprus
Port of Registry	Limassol
Classification	GL, +100 A5 "Bulk Carrier" ESP + MC
EDDI, Voluntary	6,538 (max allowed EEDI as General Cargo Ship is 11,454)

### Vessel Specific Information

	IMO No.	Year of Built	Summer Deadweight	Lightweight (mt)	Environmental Rating
MSM STAVANGER	9287340	2004	31,751	7,283	See now

### Dimensions and Main Data

Length o.a.	171.59 m
Length b.p.	163.60 m
Breadth max.	27.00 m
Depth to Main Deck	14.80 m
Deadweight Summer	31,751 mt
Deadweight Winter	30,860 mt
Deadweight Tropical	32,643 mt; Tropical Freshwater 33,791 mt
Deadweight Freshwater	31,749 mt
Draft Summer	10.418 m
Draft Winter	10.201 m
Draft Tropical	10.635 m; Tropical Freshwater 10.872m
Draft Freshwater	10.655 m
Scantling Draft	10.418 m
Speed	About 14.50kn at design draft of 9.55m and Bf2)
St. Lawrence	No
Bow thruster	No
Cement hole fitted	Yes (900mm Diameter)
Gross Tonnage	19,748
Net Tonnage	10,594
Crew Complement	30

### Capacities

LSFO-380 cst	1,396 cbm (at 96%) (including day and settling tanks)
LSMDO	370 cbm (at 96%)
Freshwater	213.9 cbm
Ballast Tanks	10,366 cbm
Hatchcovers	NAKATA MAC, Hydraulic Folding
Number of Holds, Hatches	5 Holds, 5 Hatches (nos. 2+3+4 box-shaped)
Hold Dimensions (LxBxH)	No. 1 = 22.12m x 15.00m x 13.20m No. 2 = 27.65m x 22.86m x 13.20m No. 3 = 27.65m x 22.86m x 13.20m No. 4 = 27.65m x 22.86m x 13.20m No. 5 = 27.65m x 18.00m x 13.20m

Hatch Dimensions (LxB)	No. 1 = 13.43m x 15.00m Douala No. 2 = 20.54m x 22.86m No. 3 = 20.54m x 22.86m No. 4 = 20.54m x 22.86m No. 5 = 19.75m x 18.00m
------------------------	--

**All holds mechanically ventilated / 4 air changes per hour**

Capacity (cbf)	Grain	Bale
No. 1	207,508	205,395
No. 2	316,656	314,462
No. 3	316,603	313,918
No. 4	316,603	314,425
No. 5	300,660	297,039
<b>Total</b>	<b>1,458,030 cbf</b>	<b>1,445,239 cbf</b>

Gear	
Crane 1 (Hold 1 & 2)	SWL 30.0mt x 24.0m at 10.50m outreach
Crane 2 (Hold 2 & 3)	SWL 30.0mt x 24.0m at 10.50m outreach
Crane 3 (Hold 3 & 4)	SWL 30.0mt x 24.0m at 10.50m outreach
Crane 4 (Hold 4 & 5)	SWL 30.0mt x 24.0m at 10.50m outreach
4 Electrohydraulic Cranes equipped with Motor Grabs Capacity: 8m <sup>3</sup> – 1.8 mt/m <sup>3</sup>	

Admissable Load	Container Stackweight TEU/FEU
Tanktop	22.00 mt/sqm 136/136
Weatherdeck Hatchcover No. 1	5.00 mt/sqm 40/60
Weatherdeck Hatchcover No. 2-5	3.00 mt/sqm 40/60

Machinery	Main Engine
Type	Mitsubishi 6 UEC52LA
Power	7,060 kW / 133 rpm
Grade Fuel used	LSMDO for Starting/Stopping/Manoeuvring LSFO up to 380cst for Sea service

Auxiliary Engine	
Type	Yanmar 6N18L-EV
Number	2
Power	550 kW / 720 rpm
Grade Fuel used	LSMDO Burning
Generator	480 kW, 450V, 60Hz, A.C., 720 rpm 1 Emergency Generator: Caterpillar, 250 kW

Fuel Consumption at Speed of abt 14.5kn at Design draft of 9.55m (Bf2)	
Ship at Sea	About 26.50mt LSFO 380cst at C.S.R. About 2.0mt LSMDO
Ship in Port (idle)	About 1.0mt About 4.00mt (all cranes working)
Boiler Fuel Consumption	About 0.70mt LSFO 380cst in port
Echo Speed & Consumption	About 13.00kn (Bf2) at about 16.50mt LSFO 380cst/day About 1.6mt LSMDO

Navigation & Communication Equipment	
2 ARPA Radars (1x S-band, 1x X-band)	LRIT
ECDIS & Integrated Navigation System	Anemometer & Anemoscope

Gyro Compass & Autopilot also Connected to Magnetic Compass	GMDSS A3
Doppler Speed Log	MF/HF Transmitter/Receiver
Echosounder	2 VHF Radiotelephones
GPS Receiver	3 Portable VHF
DGSP Receiver	Inmarsat Fleet77 + C
Navtex Receiver	Fax
AIS	KVH V-Sat
SSAS	Chartco Receiver
	Chartco Metmanager Receiver
<i>All details to be considered as about, given in good faith but without any guarantees</i>	

Email: [mail@mastermind-cyprus.com](mailto:mail@mastermind-cyprus.com)

Phone: +357 25256000

Fax: +357 25256007

**©Copyrights 2010 Mastermind Shipmanagement Ltd. <sup>TM</sup> All rights reserved**