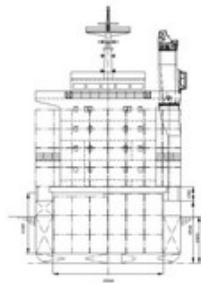
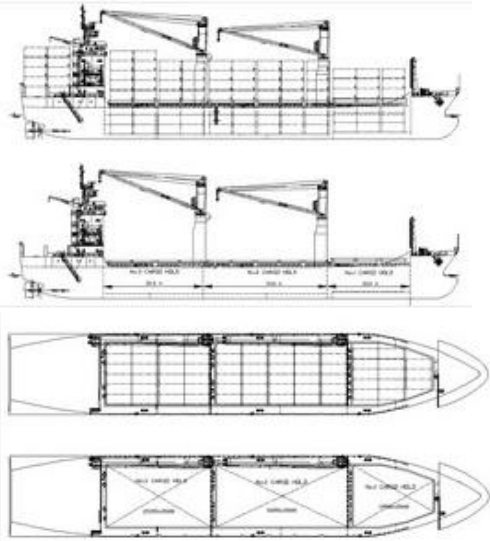


O-CLASS



Ship Basic Information

Builders	Shandong Huanghai Shipbuilding, Shidao, China
Type	Multi-purpose Double Hull Box-shaped Twin Screw Container Vessel, Ice Class
Flag	Cyprus
Port of Registry	Limassol
Classification	CCS *, CSA General Dry Cargo Ship/Equipped with Container Securing Arrangements, Strengthened for Heavy Cargoes, Ice Class B, Solas II-2 Reg.19 Class * CSM
EDDI, Voluntary	12,361 ECO Version with one engine (for this Ship type no max EEDI is allocated)

Vessel Specific Information

	IMO No.	Year of Built	Summer Deadweight	Lightweight (mt)	Environmental Rating
MSM LIMASSOL	9371919	2007	7,708	3,389	See now
MSM PANTHEA	9578359	2010	7,661	3,469	See now
MSM OMODOS	9613604	2011	7,659	3,471	See now
GOTEBORG	9393515	2008	7,716	3,413	
FALKENBERG	9520508	2008	7,708	3,388	

Dimensions and Main Data

Length o.a.	117.00 m
Length b.p.	110.00 m
Breadth max.	19.70 m
Depth to Main Deck	8.50 m
Deadweight Summer	Abt. 7,708mt dwat at abt. 6.45m draft
Draft Summer	Abt. 6.46 m
Design Draft	6.40 m
Speed	About 15.00kn at design draft (Bf2)
St. Lawrence fitted	MSM Panthea & MSM Omodos
Bow thruster	MSM Panthea & MSM Omodos – 250 kW
Cement Hole fitted	YES (900mm Diameter)
Gross Tonnage	Abt. 5,652
Net Tonnage	Abt. 2,587
Crew Complement	20

Tank Capacities	
LSFO-180 cst	MSM Limassol: abt. 386 cbm (at 100%) MSM Panthea: abt. 480 cbm (at 100%) MSM Omodos: abt. 480 cbm (at 100%)
LS Diesel Oil	MSM Limassol: abt. 235 cbm (at 100%) MSM Panthea: abt. 142 cbm (at 100%) MSM Omodos: abt. 142 cbm (at 100%)
Waterballast	Abt. 3,915 cbm
Freshwater	Abt. 163 cbm
Hatchcovers	MacGregor Original MacStack System, non-sequential opening possible
Number of Holds, Hatches	3 Holds, 3 Hatches
Hold Dimensions (LxBxH)	No. 1 = abt. 22.10m x abt. 15.00m (narrowing fore to abt. 6.60m) x abt. 8.30/8.35m No. 2 = abt. 33.15m x abt. 15.00m x abt. 8.40m No. 3 = abt. 26.65m x abt. 15.00m (narrowing aft to abt. 6.60m) x abt. 8.40/7.20m
All holds mechanically ventilated / 6 air changes per hour	

Container Capacity		
	20'	OR
No. 1	42 TEU	15 FEU + 9 TEU
No. 2	90 TEU	36 FEU + 18 TEU
No. 3	68 TEU	34 FEU + 0 TEU
Deck Hatch No. 1	57 TEU	18 FEU + 21 TEU
Deck Hatch No. 2	154 TEU	63 FEU + 27 TEU
Deck Hatch No. 3	139 TEU	67 FEU + 5 TEU
Deck, Aft of S/Structure	68 TEU	32 FEU + 4 TEU
Total	618 TEU	265 FEU + 84 TEU
Reefer Plugs	60pcs Type: S-L0336AN-3h (Mitsubishi design), 32A, 440V, 60Hz, pole 3P+E, Earth 3 o'clock position	

Capacity (cbf)	Grain	Bale
No. 1	abt. 79,285	abt. 77,202
No. 2	abt. 145,292	abt. 142,361
No. 3	abt. 112,377	abt. 113,189
Total	abt. 336,954 cbf	abt. 332,752 cbf

Gear	
Crane 1 (Hold 1 & 2)	MSM Limassol: SWL 40mt x 28.0m at 26.0m outreach MSM Panthea: SWL 80mt x 12.5m and 26mt x 28m at 25.0m outreach MSM Omodos: SWL 80mt x 12.5m and 26mt x 28m at 25.0m outreach
Crane 2 (Hold 2&3)	MSM Limassol: SWL 40mt x 28.0m at 26.0m outreach MSM Panthea: SWL 80mt x 12.5m and 26mt x 28m at 25.0m outreach MSM Omodos: SWL 80mt x 12.5m and 26mt x 28m at 25.0m outreach
Crane 1 & 2 (Hold 2)	MSM Limassol: combined SWL 80mt (no traverse onboard) MSM Panthea: combined SWL 160mt (no traverse onboard) MSM Omodos: combined SWL 160mt (no traverse onboard)
2 Haeggglunds Electro/Hydraulic Cranes	

Admissable Load	
Tank Top	MSM Limassol: 17mt/sqm; 60mt/76.5mt (TEU/FEU) MSM Panthea: 18mt/sqm; 60mt/90.0mt (TEU/FEU) MSM Omodos: 18mt/sqm; 60mt/90.0mt (TEU/FEU)
Weather Deck	Hatch 1: 4.3mt/sqm; 55mt/70.0mt (TEU/FEU) Hatch 2 & 3: 3.5mt/sqm; 55mt/70.0mt (TEU/FEU)

Machinery	Main Engine
Type	2x Daihatsu 8DKM-28L
Power	2,500 kW each
Grade Fuel used	LSFO 180cSt – RME 180 (ISO 8217-2017)

Auxiliary Engine	
Type	MSM Limassol: DEUTZ MWM License TBD 234V8 MSM Panthea: CUMINS CCF 2300-MYCM MSM Omodos: CUMINS CCF 2300-MYCM
Number	3
Power	MSM Limassol: 296 kW each MSM Panthea: 392 kW at 1800 RPM MSM Omodos: 392 kW at 1800 RPM
Grade Fuel used	LSMGO-DMA (ISO 8217-2017)
Generator	MSM Limassol: 270 kW, 450V, 60Hz MSM Panthea: 300 kW, 450V, 60Hz MSM Omodos: 300 kW, 450V, 60Hz

Fuel Consumption at Speed of abt 15kn at Design draft (Bf2)	
Ship at Sea	About 20mt LSFO 180cst/day
	About 2.0mt LSMGO (no reefers connected)
Ship in Port (idle)	About 2.0mt LSMGO (no reefers connected)
Echo Consumption with one engine	About 11.00kn at about 12.00mt LSFO 180cst/day About 2.0mt LSMGO (no reefers connected)

Navigation & Communication Equipment	
2 ARPA Radars	GMDSS
SATCOM Fleet77 + C	Navtex Receiver
Gyro Compass & Autopilot	Fax
MF/HF Transmitter/Receiver	Doppler Log
VHF Radiotelephones	Navigational Echosounder / Digital Depth sounder
3 Portable VHF	ECDIS & Integrated Navigation System
GPS Receiver	
DGSP Receiver	
Watchkeeping Receiver	
Chart Receiver	
<i>All details to be considered as about, given in good faith but without any guarantees</i>	

Email: mail@mastermind-cyprus.com

Phone: +357 25256000

Fax: +357 25256007

©Copyrights 2010 Mastermind Shipmanagement Ltd. TM All rights reserved