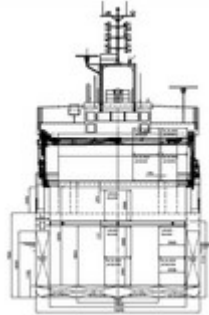
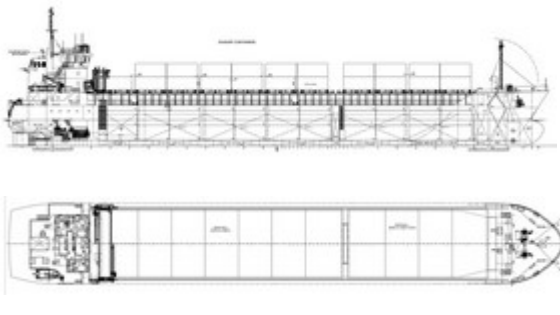


## COASTER D-CLASS



### Ship Basic Information

Builders	Rongcheng Shipyard
Type	Multi-purpose Double Hull Box-shaped Mini Bulker, Ice Class
Flag	Cyprus
Port of Registry	Limassol
Classification	GL, +100A5, E2, MULTIPURPOSE SHIP; Strengthened for Heavy Cargoes; Equipped for Carriage of Containers, +MC, AUT, E2, TSM, Solas II-2 Reg.19 Class 1.4, 5, 2, 3, 4, 5.1, 6.1, 8, 9
EDDI, Voluntary	13,837 (for this Ship type no max EEDI is allocated)

### Vessel Specific Information

	IMO No.	Year of Built	Summer Deadweight	Lightweight (mt)	Environmental Rating
MSM DON	9518971	2010	5,647	2,521	See now
MSM DOURO	9519028	2012	5,732	2,578	See now
MSM DOLORES	9519030	2012	5,745	2,565	See now

### Dimensions and Main Data

Length o.a.	MSM DON 106.00 m; MSM DOURO/MSM DOLORES 109.02 m
Length b.p.	MSM DON 99.98 m; MSM DOURO/MSM DOLORES 102.98 m
Breadth max.	15.20 m (max breadth over the fender = 15.63 m)
Depth to Main Deck	7.90 m
Deadweight Summer	MSM DON 5,647 mt; MSM DOURO 5,732 mt; MSM DOLORES 5,745 mt
Draft Summer	5.88 m
Gross Tonnage	MSM DON 4,220 gt; MSM DOURO/MSM DOLORES 4,358 gt
Net Tonnage	MSM DON 2,456 nt; MSM DOURO/MSM DOLORES 2,525 nt
Speed / Consumption	About 11.00kn at 8.0mt LSFO 180cst (at design draft of 5.10m and Bf2)
Timber Fitted	Yes
Suez / Panama Canal Fitted	Yes
St. Lawrence Fitted	Adaptable
Bowthruster	Yes
Cement Hole Fitted	Yes (900mm Diameter)
Stern Anchor Fitted	Yes
Air Draft	Gearless vessels = 27.50m air draft; Gearless vessels = 21.40m air draft
Crew Complement	11

### Capacities

LSFO-180 cst	257.02 cbm (at 100%) (incl. day and settling tanks)
MDO	58.45 cbm (at 100%)
Water ballast	1,960 cbm (at 100%)
Fresh water	69.03 cbm (at 100%)
Cargo Hold wash water tank	60.96 cbm (at 100%)
Hatches	4 pontoons on hatch no. 1 (DOURO/DOLORES have 5 pontoons) and 7 pontoons on hatch no. 2. Moved by electric driven gantry crane from MacGregor
Holds	2 cargo holds with full tween deck positions in both holds. A partial tween deck (movable bulkheads) of 18.4m length onboard

Hold Dimensions (LxBxH)	Hold No. 1 = 25.50m x 12.65m/10.1m x 9.2m: MSM DON Hold No. 1 = 29.25m x 12.65m/10.1m x 9.2m: MSM DOURO/DOLORES Hold No. 2 = 45.75m x 12.65m x 9.2m: ALL VESSELS
Movable Bulkheads	2 full bulkheads (2 panels for each b/h = 4 in total) erection possible in 3 different positions in hold no. 2; 2 positions in hold no. 1. The 4 panels can also be used as tween deck of 18.4m length.
Tween deck (movable bulkheads)	4 bulkhead panels can be placed as tween deck of 18.40m length at any position in hold no. 2 or no. 1. Clear height 5.64m from tanktop. Clear height of 3.17m from T/D to underneath hatch cover.
<b>All holds mechanically ventilated / 6 air changes per hour</b>	
Grain Capacity	MSM DON abt 289,000 cbf (hold no. 1 = 106,000 and hold no. 2 = 183,000) excluding bulkheads MSM DOURO/DOLORES abt 301,000 cbf (hold no. 1 = 118,000 and hold no. 2 = 183,000) excluding bulkheads
Containers Capacity	Total 243 TEU (159 TEU in hold and 84 TEU on deck)

<b>Admissable Load</b>		<b>Container Stack weight (Teu/Feu)</b>
Tank top	15.00 mt/sqm	60.0 mt / 60.0 mt (Teu/Feu)
Tween deck (movable bulkhead)	2.40 mt/sqm	Only 4 panels onboard for 18.4m
Weatherdeck Hatchcover no. 1&2	2.20 mt/sqm	61.0 mt / 61.0 mt (Teu/Feu)

<b>Gear</b>	
Crane 1 (Hold 1 & 2)	DOURO/DOLORES SWL 45mt x 18.0m at 17.0m outreach; DON SWL 30mt x 24.0m at 23.0m outreach (11/2011)
Crane 2 (Hold 2)	DOURO/DOLORES SWL 45mt x 18.0m at 17.0m outreach; DON SWL 30mt x 24.0m at 23.0m outreach (11/2011)
Crane 1 & 2 combined (Hold 2)	DOURO/DOLORES SWL 90mt x 12.0m outreach; DON SWL 60mt x 12.0m at outreach (11/2011)

<b>Machinery</b>	<b>Main Engine</b>
Type	YANMAR Model 6EY26
Power	MSM DON 1,920 kW at 750 rpm; MSM DOURO/DOLORES 1,990 kW at 750 rpm
Grade Fuel used	LSFO 180 cSt

<b>Auxiliary Engine</b>	
Type	HND (Deutz MWM) license TBD 234V8
Number	3
Power	249 kW each
Grade Fuel used	LSMDO
Generator	230 kW, 400V, 50Hz, 1,500 rpm
Shaft Generator	350 kW, 400V, 50Hz, 1,500 rpm
Bow thruster	Kawasaki, 300 kW

<b>Fuel Consumption at speed of abt 11.00kn at design draft of 5.10m (Bf2)</b>	
Ship at Sea	About 8.00mt LSFO 180cst
	About 0.0mt (shaft generator)
Ship in Port	About 0.80mt

<b>Navigation &amp; Communication Equipment</b>	
2 ARPA Radars	Anemometer & Anemoscope
ECDIS	GMDSS A3
Gyro Compass & Autopilot River/Sea also connected to Magnetic Compass	MF/HF Transmitter/Receiver
Doppler Speed Log	2 VHF Radiotelephones
Echosounder	3 Portable VHF

GPS Receiver	Inmarsat Fleet Broadband 250 + C
DGSP Receiver	Fax
Navtex Receiver	KVH V-Sat
AIS	ChartCo Receiver
SSAS	ChartCo Metmanager Receiver
LRIT	
<i>All details to be considered as about, given in good faith but without any guarantees</i>	

Email: [mail@mastermind-cyprus.com](mailto:mail@mastermind-cyprus.com)

Phone: +357 25256000

Fax: +357 25256007

***©Copyrights 2010 Mastermind Shipmanagement Ltd. <sup>TM</sup> All rights reserved***