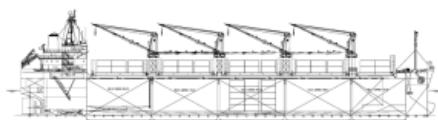


**Super S Class**



**Ship Basic Information**

Builders	Saiki Heavy Industries, Saiki, Japan
Type	Multi-Purpose Double Hull Box-shaped Bulk Carrier
Flag	Cyprus
Port of registry	Limassol
Classification	NKK, NS* Bulk Carrier Modified, BCM-A, MNS*
EDDI, voluntary	6,456 (max allowed EEDI as General Cargo Ship is 11,336)

**Vessel Specific Information**

	IMO No.	Year of Built	Summer Deadweight (mt)	Lightweight (mt)	Vessel Environmental Rating
MSM STOCKHOLM	9426879	2010	33,301	8,056	<a href="#">See now</a>

**Dimension and Main Data**

Length o. a.	171.90 m
Length b.p.	165.50 m
Breadth max.	28.00 m
Depth to maindeck	15.00 m
Deadweight Summer	33,301 mt
Deadweight Winter	32,355 mt
Deadweight Tropical	34,247 mt ; Tropical Freshwater 34,225 mt
Deadweight Freshwater	33,299 mt
Draft Summer	10.624 m
Draft Winter	10.403 m
Draft Tropical	10.845 m ; Tropical Freshwater 11.086 m
Draft Freshwater	10.865 m
Scantling draft	10.624 m
Speed	about 15.00 kn (at design draft of 9.65 m and Bf 2)
St.Lawrence	NO
Bowthruster	NO
Cement hole fitted	YES (900mm Diameter)
GT	21,018
NT	10,927
Crew Complement	30

**Capacities**

HFO-380	1,456 cbm (at 100 %) (including day and settling tanks)
MDO	172 cbm (at 100 %)
Freshwater	243 cbm
Ballast tanks	12,922 cbm at 100%
Hatchcovers	NAKATA MAC, hydraulic folding
Number of holds, hatches	5 holds, 5 hatches (nos. 1+2+3+4+5 box shaped)
Hold dimensions (LxBxH)	No. 1: 22.12 m x 17.20 m x 15.20 m No. 2: 26.86 m x 23.60 m x 15.20 m No. 3: 26.86 m x 23.60 m x 15.20 m No. 4: 26.86 m x 23.60 m x 15.20 m No. 5: 26.86 m x 23.60 m x 12.40 m
Hatch dimensions (LxB)	No. 1: 13.43 m x 17.20 m No. 2: 19.75 m x 23.60 m No. 3: 19.75 m x 23.60 m No. 4: 19.75 m x 23.60 m No. 5: 19.75 m x 23.60 m

All holds mechanically ventilated / 4 air changes per hour

Capacity (cbf)	Grain	Bale
No. 1	190,400	187,857
No. 2	336,683	332,865
No. 3	337,954	334,215

No. 4	336,796	333,211
No. 5	280,457	277,986
<b>Total</b>	<b>1,482,290</b>	<b>1,466,134</b>

**Gear**

Crane 1 (Hold 1 & 2)	SWL 36.0 mt x 24.00 m at 10.00 m outreach
Crane 2 (Hold 2 & 3)	SWL 36.0 mt x 24.00 m at 10.00 m outreach
Crane 3 (Hold 3 & 4)	SWL 36.0 mt x 24.00 m at 10.00 m outreach
Crane 4 (Hold 4 & 5)	SWL 36.0 mt x 24.00 m at 10.00 m outreach

The vessel has 4 electro hydraulic cranes which are equipped with motor grabs capacity: 12 m<sup>3</sup> -1.8 mt/m<sup>3</sup>

**Admissible load**

**Container Stackweight teu/feu**

Tanktop	22.00 mt/sqm	136/136
Weatherdeck hatchcover no. 1	5.00 mt/sqm	40/60
Weatherdeck hatchcover no. 2-5	3.00 mt/sqm	40/60

**Machinery**

**Main engine**

Type	MITSUBISHI 6 UEC 45 LSE	
Power	7,470 kw / 130 rpm	
Grade fuel used	MDO for STARTING/STOPPING/MANOUVERING	
	HFO up to 380 cst for sea service	

**Auxillary engine**

Type	Yanmar 6N18L-EV	
Number	2	
Power	550 KW /720 RPM	
Grade fuel used	HFO/MDO burning	
Generator	480 kw 450 V, 60 Hz, A.C.,720 RPM	
	1 Emergency Generator CATERPILLAR, 250 kW	

**Fuel consumption at a speed of about 15.00 kn at design draft of 9.65m and (Bf 2)**

Ship at sea	about 26.50 mt HFO 380 at C.S.R.
	about 2.00 mt HFO 380
Ship in port	about 1.00 mt (idle)
	about 4.00 mt (all cranes working)
Boiler fuel consumption	about 0.70 mt HFO in port
Eco Speed & Consumption	about 13.00 kn (Bf 2) at about 17.00 mt IFO 380/day about 1.6 mt MDO

**Navigation and communication equipment**

2 ARPA radars (1x S-band, 1x X-band)	LRIT
ECDIS & Integrated Navigation System	Anemometer & Anemoscope
Gyro compass & autopilot also	GMDSS A3
connected to magnetic compass	MF/HF transmitter/receiver
Doppler speed log	2 VHF radiotelephones
Echosounder	3 portable VHF
GPS receiver	Inmarsat Fleet77 + C
DGPS receiver	Fax
Navtex receiver	KVH V-Sat
AIS	Chartco receiver
SSAS	Chartco metmanager receiver

All details to be considered as about, given in good faith but without any guarantee.