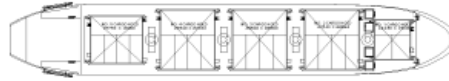
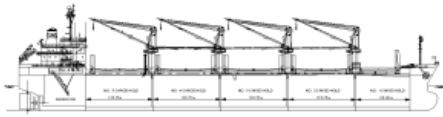


S Class



Ship Basic Information

Builders	Saiki Heavy Industries Saiki, Japan
Type	Multi-Purpose Double Hull Box-shaped Bulk Carrier
Flag	Cyprus
Port of registry	Limassol
Classification	GL, + 100 A5 "Bulk Carrier" ESP + MC
EDDI, voluntary	6,538 (max allowed EEDI as General Cargo Ship is 11,454)

Vessel Specific Information

	IMO No.	Year of Built	Summer Deadweight (mt)	Lightweight (mt)	Vessel Environmental Rating
MSM STAVANGER	9287340	2004	31,751	7,283	See now

Dimension and Main Data

Length o. a.	171.59 m
Length b.p.	163.60 m
Breadth max.	27.00 m
Depth to maindeck	14.80 m
Deadweight Summer	31,751 mt
Deadweight Winter	30,860 mt
Deadweight Tropical	32,643 mt; Tropical Freshwater 33,791 mt
Deadweight Freshwater	31,749 mt
Draft Summer	10.418 m
Draft Winter	10.201 m
Draft Tropical	10.635 m; Tropical Freshwater 10.872 m
Draft Freshwater	10.655 m
Scantling draft	10.418 m
Speed	about 14.50 kn (at design draft of 9.55 m and Bf 2)
St. Lawrence fitted	NO
Bowthruster	NO
Cement hole fitted	YES (900 mm Diameter)
GT(ITC 69)	19,748
NT	10,594
Crew Complement	30

Capacities

HFO-380	1,396 cbm (at 96%) (including day and settling tanks)
MDO	370 cbm (at 96%)
Freshwater	213.9 cbm
Ballast tanks	10,366 cbm
Hatchcovers	NAKATA MAC, hydraulic folding
Number of holds, hatches	5 holds, 5 hatches (nos. 2+3+4 box shaped)
Hold dimensions (LxBxH)	No. 1: 22.12 m x 15.00 m x 13.20 m No. 2: 27.65 m x 22.86 m x 13.20 m No. 3: 27.65 m x 22.86 m x 13.20 m No. 4: 27.65 m x 22.86 m x 13.20 m No. 5: 27.65 m x 18.00 m x 13.20 m
Hatch dimensions (LxB)	No. 1: 13.43 m x 15.00 m No. 2: 20.54 m x 22.86 m No. 3: 20.54 m x 22.86 m No. 4: 20.54 m x 22.86 m No. 5: 19.75 m x 18.00 m

All holds mechanically ventilated / 4 air changes per hour

Capacity (cbf)	Grain	Bale
No. 1	207,508	205,395
No. 2	316,656	314,462
No. 3	316,603	313,918

No. 4	316,603	314,425
No. 5	300,660	297,039
Total	1,458,030	1,445,239

Gear

Crane 1 (Hold 1 & 2)	SWL 30.0 mt x 24.00 m at 10.50 m outreach
Crane 2 (Hold 2 & 3)	SWL 30.0 mt x 24.00 m at 10.50 m outreach
Crane 3 (Hold 3 & 4)	SWL 30.0 mt x 24.00 m at 10.50 m outreach
Crane 4 (Hold 4 & 5)	SWL 30.0 mt x 24.00 m at 10.50 m outreach

The vessel has 4 electro hydraulic cranes which are equipped with motor grabs capacity: 8 m³ -1.8 mt/m³

Admissable load

Container Stackweight teu/feu

Tanktop	22.00 mt/sqm	136/136
Weatherdeck hatchcover no. 1	5.00 mt/sqm	40/60
Weatherdeck hatchcover no. 2-5	3.00 mt/sqm	40/60

Machinery

Main engine

Type	MITSUBISHI 6 UEC52LA	
Power	7,060 kw / 133 rpm	
Grade fuel used	MDO for STARTING/STOPPING/MANOUVERING	
	HFO up to 380 cst for sea service	

Auxillary engine

Type	Yanmar 6N18L-EV	
Number	2	
Power	550 KW /720 RPM	
Grade fuel used	MDO burning	
Generator	480 kw 450 V, 60 Hz, A.C.,720 RPM	
	1 Emergency Generator CATERPILLAR, 250 kW	

Fuel consumption at a speed of about 14.50 kn at design draft of 9.55m and (Bf 2)

Ship at sea	about 26.50 mt HFO 380 at C.S.R.
	about 2.00 mt MDO
Ship in port	about 1.00 mt (idle)
	about 4.00 mt (all cranes working)
Boiler fuel consumption	about 0.70 mt HFO in port
Eco Speed & Consumption	about 13.00 kn (Bf 2) at about 16.50 mt IFO 380/day about 1.6 mt MDO

Navigation and communication equipment

2 ARPA radars (1x S-band, 1x X-band)	LRIT
ECDIS & Integreted Navigation System	Anemometer & Anemoscope
Gyro compass & autopilot also	GMDSS A3
connected to magnetic compass	MF/HF transmitter/receiver
Doppler speed log	2 VHF radiotelephones
Echosounder	3 portaple VHF
GPS receiver	INMARSAT Fleet 77 + C
DGPS receiver	Fax
Navtex receiver	KVH V-Sat
AIS	Chartco receiver
SSAS	Chartco metmanager receiver

All details to be considered as about, given in good faith but without any guarantee.