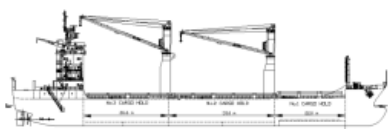


MCP Class



Ship Basic Information

Builders	Shandong Huanghai Shipbuilding
Type	Multi-Purpose Double Hull Box-shaped Twin Screw Container Vessel, Ice class
Flag	Cyprus
Port of registry	Limassol
Classification	CCS * CSA General Dry Cargo Ship/Equipped with container securing Arrangement, Strengthened for heavy cargos, Ice Class B Solas II-2 REG 19 * CSM
EDDI, voluntary	12,361 ECO version with one engine. (for this Shiptyp no max EEDI is allocated)

Vessel Specific Information

	IMO No.	Year of Built	Summer Deadweight (mt)	Lightweight (mt)	Vessel Environmental Rating
MSM LIMASSOL	9371919	2007	7,708	3,389	See now
MSM PANTHEA	9578359	2010	7,661	3,469	See now
MSM OMODOS	9613604	2011	7,659	3,471	See now
GOTEBORG	9393515	2008	7,716	3,413	
FALKENBERG	9520508	2008	7,708	3,388	

Dimension and Main Data

Length o. a.	117.00 m
Length b.p.	110.00 m
Breadth max.	19.70 m
Depth to maindeck	8.50 m
Deadweight summer	about. 7,708 mt dwat at abt. 6.45 m draft
Draft summer	abt 6.46 m
Design draft	6.40 m
Speed	about 15 knots at design draft (Bf 2)
ST.LAWRENCE	MCP Panthea & MCP Omodos
BOWTHRUSTER	MCP Panthea & MCP Omodos - 250 Kw
CEMENT HOLE FITTED	YES (900mm Diameter)
GT	abt 5,652
NT	abt 2,687
Crew Complement	20

Tank Capacity

Fuel IFO 180	MCP Limassol : abt. 386 cbm (at 100%) MCP Panthea : abt 480 cbm (at 100%) MCP Omodos : abt 480 cbm (at 100%)
Diesel Oil	MCP Limassol : abt. 235 cbm (at 100%) MCP Panthea : abt 142 cbm (at 100%) MCP Omodos : abt 142 cbm (at 100%)
Freshwater	abt. 163 cbm
Waterballast	abt. 3,915 cbm
Hatchcovers	MacGREGOR original MacSTACK system, non-sequential opening possible
Number of holds, Hatches	3 holds, 3 hatches
Hold dimensions(LxBxH)	No. 1: abt. 22.10 m x abt. 15.00 m (narrowing fore to abt. 6.60m) x abt. 8.30/8.35m No. 2: abt 33.15 m x abt 15.00 mx abt 8.40 m No. 3: abt. 26.65 m x abt. 15.00 m (narrowing aft to abt. 6.60m) x abt. 8.40/7.20 m

All holds mechanically ventilated / 6 air changes per hour

Container capacity

	20'	OR
No. 1	42 TEU	15 FEU + 9 TEU
No. 2	90 TEU	36 FEU + 18 TEU
No. 3	68 TEU	34 FEU + 0 TEU

Deck, Hatch No.1	57 TEU	18 FEU + 21 TEU
Deck, Hatch No.2	154 TEU	63 FEU + 27 TEU
Deck, Hatch No.3	139 TEU	67 FEU + 5 TEU
Deck, Aft of s/structure	68 TEU	32 FEU + 4 TEU
Total	618 TEU	265 FEU + 84TEU

Capacity (cbf)	Grain	Bale
No. 1	abt. 79,285 cbf	abt. 77,202 cbf
No. 2	abt. 145,292 cbf	abt. 142,361 cbf
No. 3	abt. 112,377 cbf	abt. 113,189 cbf
Total	abt. 336,954 cbf	abt. 332,752 cbf
Reefer Plugs	60 pcs Type:S-L0336AN-3h (Mitsubishi design), 32A, 440V, 60 Hz, pole 3P+E, earth 3 o'clock position	

Gear:

Crane 1 (Hold 1&2):	MCP Limassol : SWL 40 mt x 28 m at 26.00 m outreach MCP Panthea : SWL 80 mt x 12.5 m and 36 mt x 28 m at 25.00 m outreach MCP Omodos : SWL 80 mt x 12.5 m and 36 mt x 28 m at 25.00 m outreach
Crane 2 (Hold 2&3):	MCP Limassol : SWL 40 mt x 28 m at 26.00 m outreach MCP Panthea : SWL 80 mt x 12.5 m and 36 mt x 28 m at 25.00 m outreach MCP Omodos : SWL 80 mt x 12.5 m and 36 mt x 28 m at 25.00 m outreach
Crane 1 & 2 (Hold 2):	MCP Limassol : combined SWL 80 mt (no traverse on board) MCP Panthea : combined SWL 160 mt (no traverse on board) MCP Omodos : combined SWL 160 mt (no traverse on board)
2 Haeggglunds electro/hydraulic cranes	

Admissable load

Tank Top:	MCP Limassol : 17 mt/sqm; 60 mt/76.5 mt (TEU/FEU) MCP Panthea : 18 mt/sqm; 60 mt/90.0 mt (TEU/FEU) MCP Omodos : 18 mt/sqm; 60 mt/90.0 mt (TEU/FEU)
Weather Deck:	Hatch 1: 4.3 mt/sqm; 55 mt/70.0 mt (TEU/FEU) Hatch 2 & 3: 3.5 mt/sqm; 55 mt/70.0 mt (TEU/FEU)

Machinery

Main engine

Type	2x Daihatsu 8DKM-28L
Power	2,500KW each
Grade fuel used:	IFO 180 - RME 180 (ISO 8217-2005)

Auxillary engine

Type	MCP Limassol : DEUTZ MWM license TBD 234V8 MCP Panthea : CUMINS CCF 2300-MYCM MCP Omodos : CUMINS CCF 2300-MYCM
Number	3
Power	MCP Limassol : 296 KW each MCP Panthea : 392 KW at 1800 RPM MCP Omodos : 392 KW at 1800 RPM
Grade fuel used	MGO-DMA (ISO 8217-2005)
Generator	MCP Limassol : 270 KW, 450 V, 60 Hz MCP Panthea : 300 KW, 450 V, 60 Hz MCP Omodos : 300 KW, 450 V, 60 Hz

Fuel consumption at a speed of about 15 kn at design draft (Bf 2)

Ship at sea:	about 20 mt IFO 180/day about 2.0 mt GO (No reefers connected)
Ship in port (idle):	about 2.0 mt GO (No reefers connected)
Eco Consumption with one engine:	about 11.00kn at about 12.00 mt IFO 180/day about 2.0 mt GO (No reefers connected)

Navigation and communication equipment

- 2 Arpa radars	- full GMDSS fitted
- SATCOM Fleet77 + C	- Navtex Receiver
- gyro compass/autopilot	- fax
- MF/HF transmitter/receiver	- Doppler log
- VHF radiotelephones	- navigational echosounder
- 3 portable VHF	with digital depthsouder
- GPS Receiver	- ECDIS & Integrated Navigation System
- DGPS Receiver	
- watchkeeping receiver	
- chart receiver	

All details to be considered as about, given in good faith but without any guarantee.

